

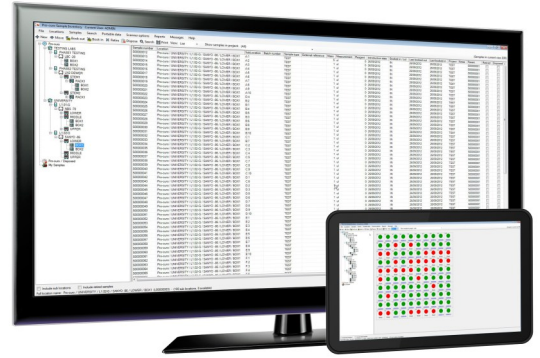
Pro-curo  
Software Ltd

Looking after you and your samples

# Installation Guide

# Pro-curo Enterprise Installation

Thank you for ordering the Pro-curo sample tracking and inventory system. Please be aware that we do offer an installation service, or alternatively you can upgrade your standard support contract to our premium version with one of the benefits being free installation. For more details on the above or if you have any further questions please visit our website [www.pro-curo.com](http://www.pro-curo.com)



## Installation Pre-requisites

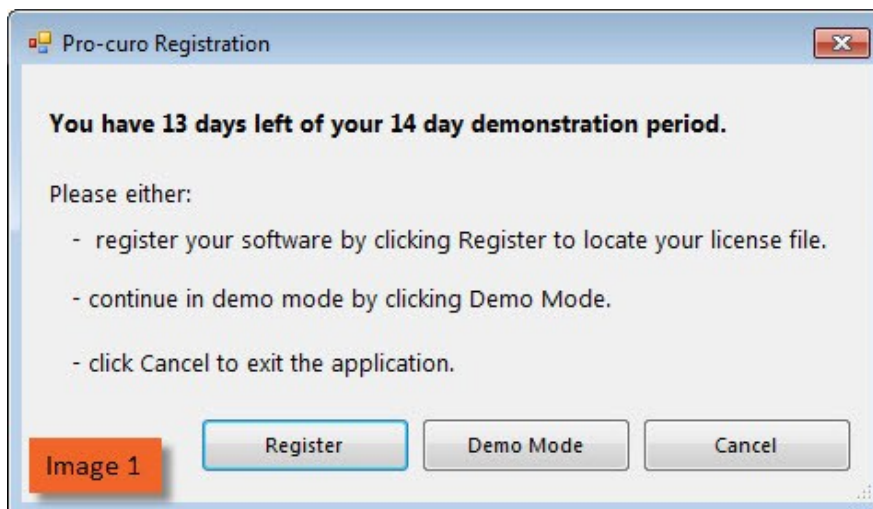
You will need to have the following items installed before you can begin the your Pro-curo installation:

- Microsoft .NET framework 4.0 or later
- Windows Installer 3.1 or later

You can check this through the Control Panel and the programs and features lists. The above files can be downloaded via the Microsoft website .

## Running in Demo Mode

The demo version is available as part of the main installation. Simply follow the installation guide but instead of registering your software select Demo Mode (see Image 1).

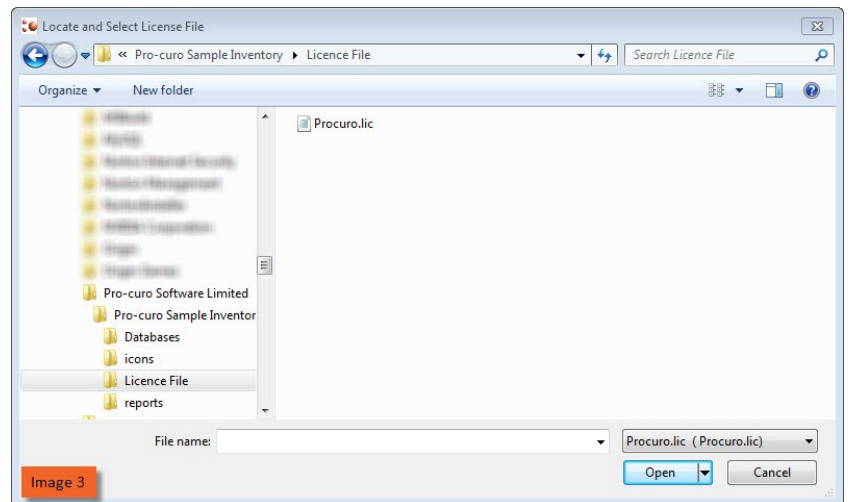
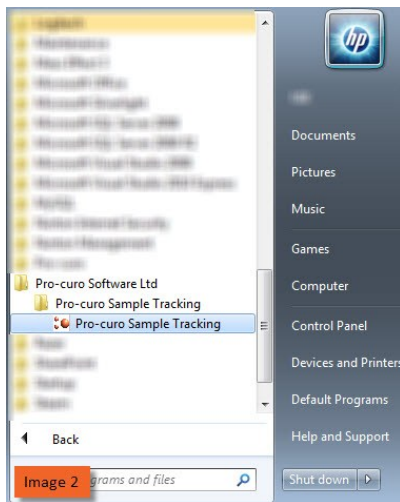


## Pro-curo Enterprise Installation

This page will guide you through process of installing your Pro-curo Lite system. The software and software licence key (SLK) will installed on the same PC which may or may not be part of a network. The Access database can be installed locally or on the network if required.

- Open the software dongle and locate the Pro-curo v3 folder.
- Locate the Pro-curo.msi file and double click.
- Follow the on screen instructions.
- Procure.mdb and proкуроarchive.mdb need to be created on the SQL server.

The software will install a shortcut in the start menu (see Image 2).



Before running the software for the first time you will need to locate your software licence key, this will have been sent to the main contact, and save it to \*\*\*\*C:\Program Files (x86)\Pro-curo Software Limited\Pro-curo Sample Inventory\Licence Key\*\*\*\*. On initial start up you will see the Pro-curo Registration screen (see Image 1), select Register, then in the Locate and Select License File screen move to the directory location above and select the key (see Image 3). You will receive a message confirming your validation has been successful.

You should now see the SQL Server Connection screen (see Image 4), the first line should confirm which version of SQL you are working with. You will need to contact the person who created the databases above and ask them for the server name, user name and password for the server. These only need to be entered at initial start up. Once the information is added click ok and you should see the System Logon screen (see Image 5).



An Admin user is added as default with a password of Admin (see Image 5), the password can be changed in the Administration tab, please see the user manual for details on how to change passwords.

**Congratulations! You are now ready to use Pro-curo!**