

Pro-curo -Enterprise TRIAL Installation

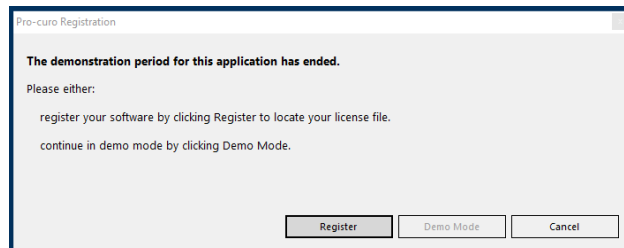
This document will guide you through process of installing your Pro-curo system.

Installing the Pro-curo Application

- Download or Open the software dongle and locate the Pro-curo TRIAL folder.
- Locate the Pro-curo Sample Inventory 4.x.x.msi.msi file and double click.
- Follow the on screen instructions.
- The application is now installed; a shortcut will appear in your PC's start menu.

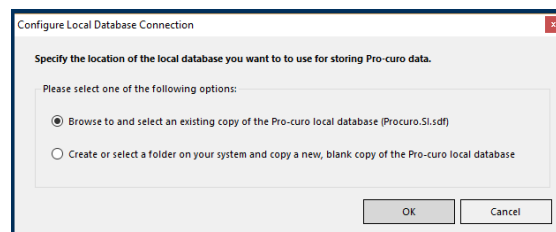
Running Pro-curo for the first time.

Locate and click on the Pro-curo application icon, on initial start-up you will see the Pro-curo Registration screen select Demo Mode.



You should now see the Configure Local Database Connection screen, you are presented with two options to either locate an existing database, or to create or select a folder on your PC to setup a new blank pro-curo database. Select the create or select a folder option.

NB/You would use the locate option if you were moving your existing copy of Pro-curo to a new PC. This screen is only shown on the first run of the software.



Once you click on OK you will see the System Logon screen. An Admin user is added as default with a password of Admin, the password can be changed in the Administration tab after this initial logon. Please see the user manual for details on how to change passwords.

