

Pro-curo
Software Ltd

Looking after you and your samples

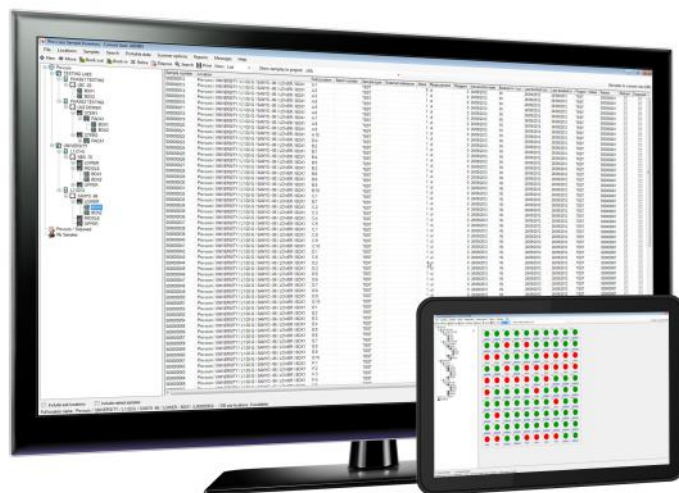
Software Brochure

The company....

Pro-curo Software Ltd is a supplier of sample inventory and tracking software into the life science markets, with high focus on providing technical support to our users via a telephone help-desk, internet forums and blogs along with other social media feeds.

What makes us different....

We are focused on looking after our customers and their samples in a way that no other software supplier is offering. We offer two versions of support contract each having a list of features that offer the appropriate level of support you need.



The software....

Pro-curo is designed to be an off the shelf software package to help you track and manage your samples in a quick, easy and user friendly manner. It is based around the Human Tissue Act as this was a big driving force in getting laboratories to track their samples, but now the need to be able to see where, when and who has edited your samples is now much greater across all labs. It is now no longer acceptable to open a freezer and wonder who's samples have been moved in front of yours and where exactly have yours been moved to, let alone trying to decipher what it says in the lab book.

Right from the first screen you can see the power of Pro-curo, you can view your samples as a list or grid and edit them at them at the click of a button, swiftly move them between locations, split (aliquot) them in to new samples with every function performed in the system documented in a full history audit trail.

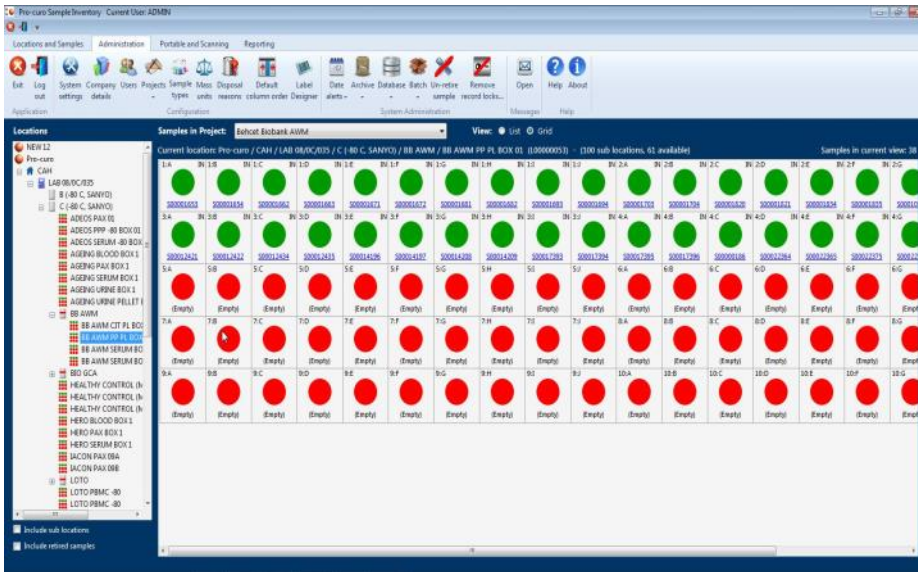
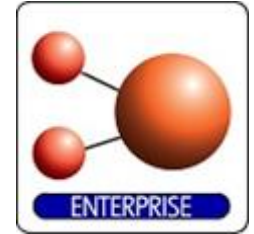
Security of the sample information is also very important to many of our users so we have a unique login system in which each user has their own login and password and everything they do within the system is stamped with their user ID. This function also allows you to assign different rights to each user such as editing samples, viewing them, disposing of them and letting them only view their own samples within the system.

Although Pro-curo is an off the shelf package we realise that your use of our software will be unique. You have the ability to design and customise your own location structure to suit your facility, define the information you want to include about your samples by project and even add your own mass measurement types.

Pro-curo has the ability to create labels with barcoded information on them and can easily integrate with your labelling solution. On top of this it also has the ability to integrate with flatbed scanners whether single or multiple readers. Pro-curo also has the ability to import current sample information into it so there is no worry about having to re-enter your sample information.

Pro-curo Enterprise

This fully featured package has been designed for Higher end sample tracking. Offering a true multi user database structure and many higher level features it addresses groups storing up to 99,999,999 samples, within any number of freezer locations and access by any number of researchers simultaneously.

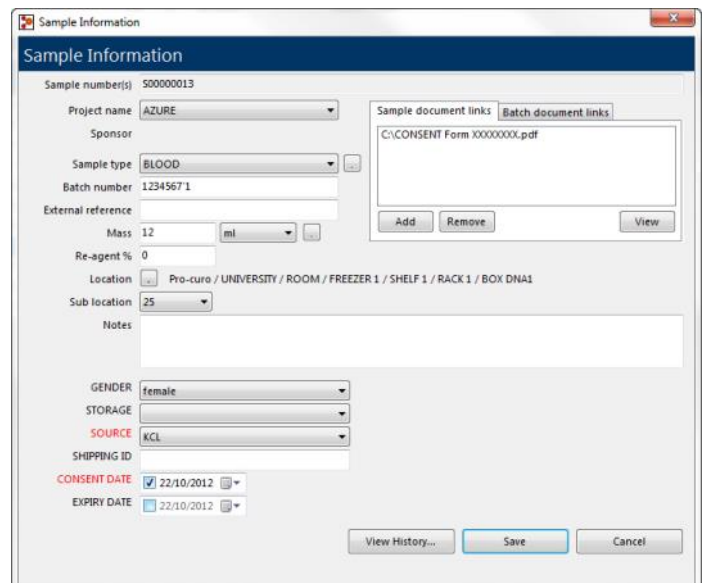


Using the powerful SQL database structure, the system is designed to work with an institutes existing database hardware. IT involvement is encouraged by Pro-curo Software Ltd from the beginning of the selection process.

In addition to supplying software to run on individual groups and researcher's workstations, the true power of barcode and RFID technology can be harnessed to offer a fully traceable

system with barcode driven transactional data allowing users to spend time on research not on recording information. This is best achieved by using Pro-curo's Mobile software offering (included within the Enterprise package), allowing researchers to perform standard database functions in the laboratory, at their desk and even within the freezer and processing rooms. With just a click of a button, scan of a barcode or the reading of a tag many functions can be performed quickly, easily and with reduced errors.

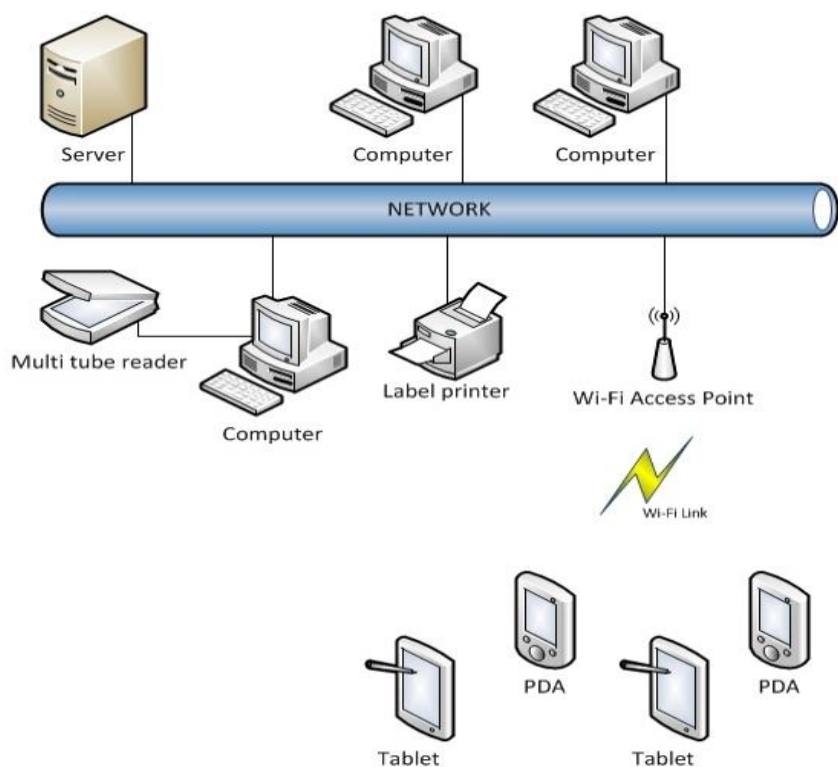
Due to the cost effective nature of this fully featured package, you don't have to be a large institute to afford to implement the software. Users range across schools within universities, hospital research focussed departments, full site animal institutions, biotech and pharmaceutical companies and contract research labs.



Pro-curo Features

- Split samples at the click of a button
- Book in and book out functions
- Track samples from multiple research projects, with their own customisable user fields
- x/y Sub locations at Box level
- Integrated Barcode & RFID features to improve accuracy and reduce time
- Automatic printing of data matrix bar codes
- Powerful search functions
- Powerful reporting system (customised reports are also available)
- Complete history of every transaction for traceability
- 5 users as standard
- Portable application for Pocket PC or Win CE device
- Compatible with iPad 1st, 2nd or 3rd generation and most android based tablet
- 128bit database encryption algorithm
- Powerful multi-level location structure

Pro-curo Enterprise is available as a 5, 10 or Unlimited user version, and this can be added to at any time in 1, 3 and 5 user licence bolt-ons. The Enterprise system is for labs that require the software to be in multiple labs, on multiple workstations and who wish to exchange data with other systems and are using it on a more mobile basis. Pro-curo Enterprise is also perfect for users who require greater security and want to use it across departments.



Typical hardware configuration

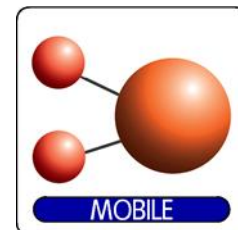
Multiple user – Server or local PC install of SQL Server required

Works with MS SQL or My SQL

SQL not supplied with Pro-curo

Setting your workforce free

Pro-curo Software has a suite of mobile offerings, and each of them allows labs and bio-repositories to have solutions for different contexts and user types as needed rather than



Pro-curo Mobile



An app for intensive users who are willing to install it for a precise purpose, this native app allows completely independent operation and does not need a desktop in any way (as long as it is connected wirelessly) allowing workers to be free to work in a freezer room or clean room outside the lab. The app provides users with the ability to move, book in/out and dispose of samples, along with a very powerful audit facility to stock-check freezers. Using one of Pro-curo's combined devices that include an integrated 2D barcode reader creates even greater efficiency gains because a technician doesn't need to type in a sample number or figure out a current sample location. One simply selects "move samples" to scan one or 100 samples, then scans the rack, drawer, or box location barcode and the process is complete - along with full traceability of when/where/by whom this action was performed to be added securely to the central database. Data storage is not external cloud-based because of the sensitivity and security of the data.

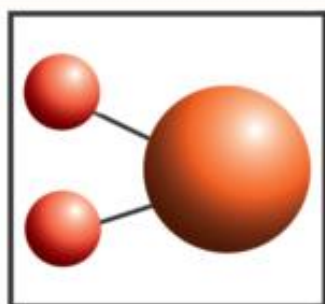
Pro-curo Remote

An app for regular users who want to quickly switch from desktop to tablet, this app allows workers to start processing samples on a desktop in their lab and then take the screen virtually with them on their mobile tablets. The advantage here is a seamless transfer, by simply turning off the desktop screen and turning on the tablet, opening the Pro-curo app, and working at the same software location, but now free to roam (within the confines of the wireless network)



Pro-curo Features

Max no of samples	100,000,000
Complete history of every transaction	YES
Multi PC	YES - 1,3,5,10,Unlimited
Database structure	MSSQL & MySQL
User manager	YES
MySamples	YES
Sample view restricted by project	YES
Auto logoff function	YES
Split samples function	YES
Customisable user fields.	YES
Edit multiple samples	YES
Book in and book out function.	YES
Multi level location structure	YES - 7
X/Y sublocations (box/plate level)	YES
Grid view	YES
Standard report generation	YES
Custom reports	YES
Label design	GRAPHICAL
Barcode generation*	1D & 2D
Data import function	YES
Sample search function	YES
Advanced SQL search builder	YES
Date alerts	YES
Double blind auditing function.	YES
History archive function	YES
Internal messaging	YES



**Pro-curo
Software Ltd**

10 Roffye Court
Crawley Road
Horsham
West Sussex
RH12 4DT, UK